



SEURECA  VEOLIA

Consulting Engineers

SEURECA IS THE CONSULTING ENGINEER GROUP OF VEOLIA

Seureca provides expert solutions for utilities, public organizations, and industries to efficiently manage their water, waste, and energy services. Seureca contributes directly to the sustainability performance of customers in the public and private sectors, allowing them to pursue development while protecting the environment. Support by Seureca is always tailored to client's specific needs and local context. Seureca assists utilities and industries throughout the whole project lifecycle,

from pre-studies to implementation, including work supervision, operational support, and knowledge transfer schemes. Throughout this integrated approach, we help our clients meet their objectives and enhance their technical, financial, and social performance.

Seureca is part of the Veolia group, global leader in resource management, with over 200,000 employees and a 160-year experience in water, waste, and energy services.

Our services





Few references

🌿 Sultanate of Oman

5-year water service assistance to operations - Public Authority for Electricity and Water.

Expertise: Master Plan, Business Plan, Non-Revenue Water, Hydraulic Modelling, SCADA, CMMS.

🌿 India

Industrial energy efficiency study and implementation support - SIBDI.

Expertise: Cluster Profile, Energy Efficiency Assessment, Audit, Implementation Support.

🌿 Netherlands

Industrial waste water treatment study - Lyondell Basel.

Expertise: Wastewater Treatment Scenarios, Lab Research and Scale Testing, OPEX and CAPEX Calculation.

🌿 France

Design, studies, and work supervision in property development project - Les Bordes Golf International.

Expertise: Wastewater Networks, Firefighting, Stormwater Reuse, Energy, Wastewater Plant.

🌿 Djibouti

Waste management technical assistance - Djibouti Social Development Agency (ADDs)

Expertise: Waste Collection, Treatment and Disposal, Assistance to waste landfill operation, Institutional and Regulatory support, Waste Sorting and Recycling.

🌿 Venezuela

Wastewater treatment strategy - Caracas, Hidroven.

Expertise: Discharge Measurement and Projections, Wastewater and Sludge Treatment Scenarios, Comprehensive Strategy Definition to Protect the River Guaire, Wastewater Treatment Plant Preliminary Design.

🌿 Kenya

Work supervision for Kisumu water and sanitation - Lake Victoria South Water Services Board.

Expertise: Tender Preparation and Management, Work Supervision, Local Awareness Program.

🌿 Philippines

Feasibility Studies for solid waste management pilot sites - Manila city, Asian Development Bank.

Expertise: Feasibility Studies for collection, treatment, and disposal, Environmental Impact Assessment, Financial Studies, Socio-economic Surveys, Procurement Plan, Capacity Building.

🌿 Kazakhstan

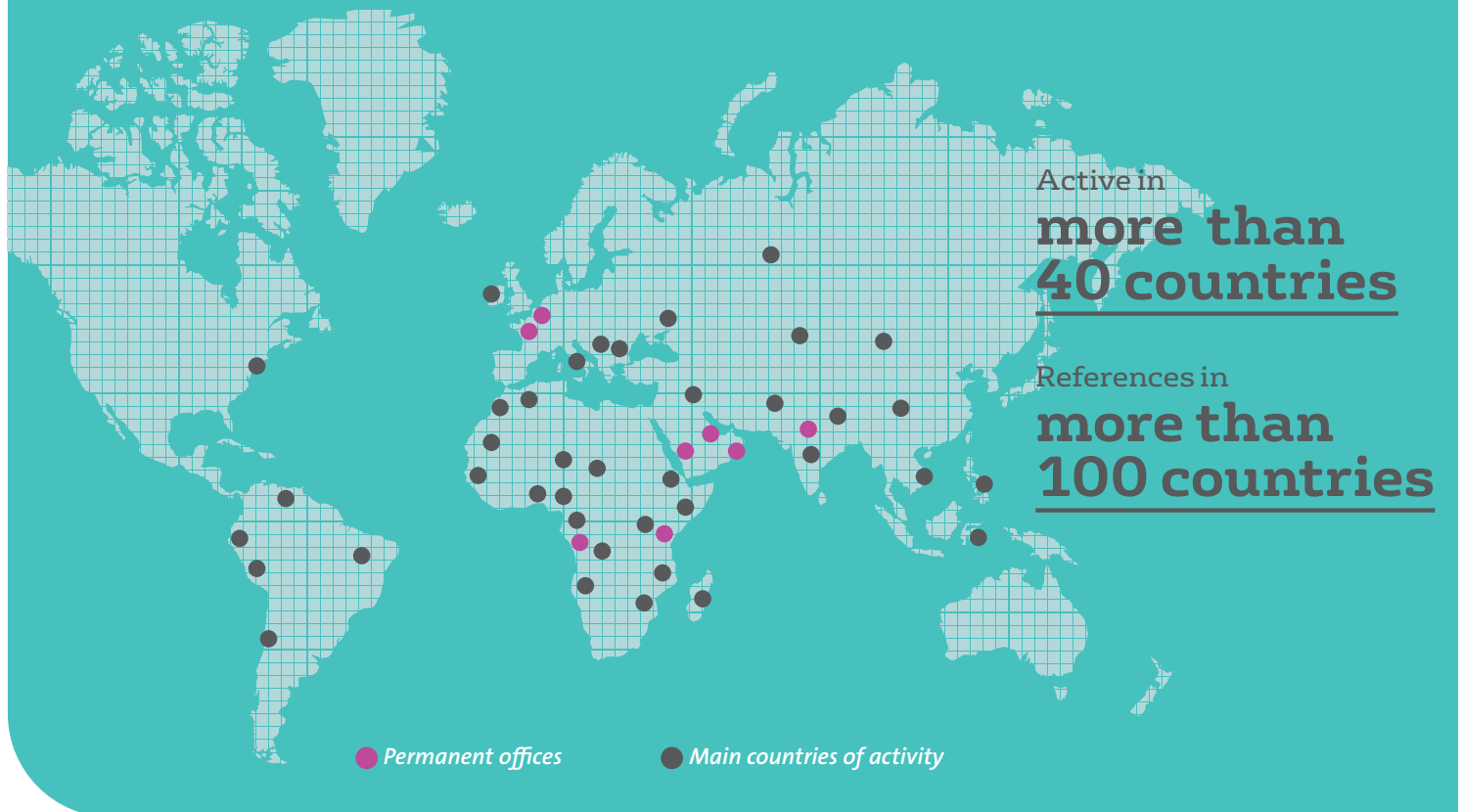
Energy Master Plan - City of Almaty.

Expertise: Technical Audit of the facilities (electricity and heat production and distribution), review of operational practices, Heat and Electrical losses reduction, Energy Demand analysis, Long term Investment Program and prioritisation, Economic analysis.



A WORLDWIDE EXPERTISE

Seureca activities are supported by a network of international permanent offices and by its reliable taskforce of engineers, available for short to long-term projects around the globe. In addition, Seureca can draw upon the Veolia Group expertise and its broad network of international operational experts.



SEURECA (International)

78 - 78 bis rue Championnet - 75018 Paris - France
Tel: +33 1 45 72 92 92 - Fax: +33 1 45 72 92 93 - e-mail: contact@seureca.com

SETUDE (France)

78 - 78 bis rue Championnet - 75018 Paris - France
Tel: +33 1 45 72 92 72 - Fax: +33 1 45 72 78 61 - e-mail: contact@setude.com

EPAS (Industrial water management)

EPAS NV - Eco Process Assistance
Dok Noord 4C bus 003 - 9000 Gent - Belgium
Tel: +32 (0)9 381 51 30 - Fax: +32 (0)9 221 82 18 - e-mail: epas@epas.be

DESL (Energy efficiency)

819-8th Floor, Antriksh Bhawan, 22 - K G Marg, New Delhi - 110 001
Tel: 0091 11 40791100 - Fax: 0091 11 40791101 - e-mail: desl@deslenergy.com